

THE FACTS

59,650
 (Point-In-Time Count, 2015)
 Estimated homeless population
 in LA & Orange counties

\$6.7 Million
 in hospital dumping fines
 since 2007 for **12** hospitals
 in LA County

Estimated cost of
**1.5 days in
 the hospital**

APPROXIMATELY EQUALS

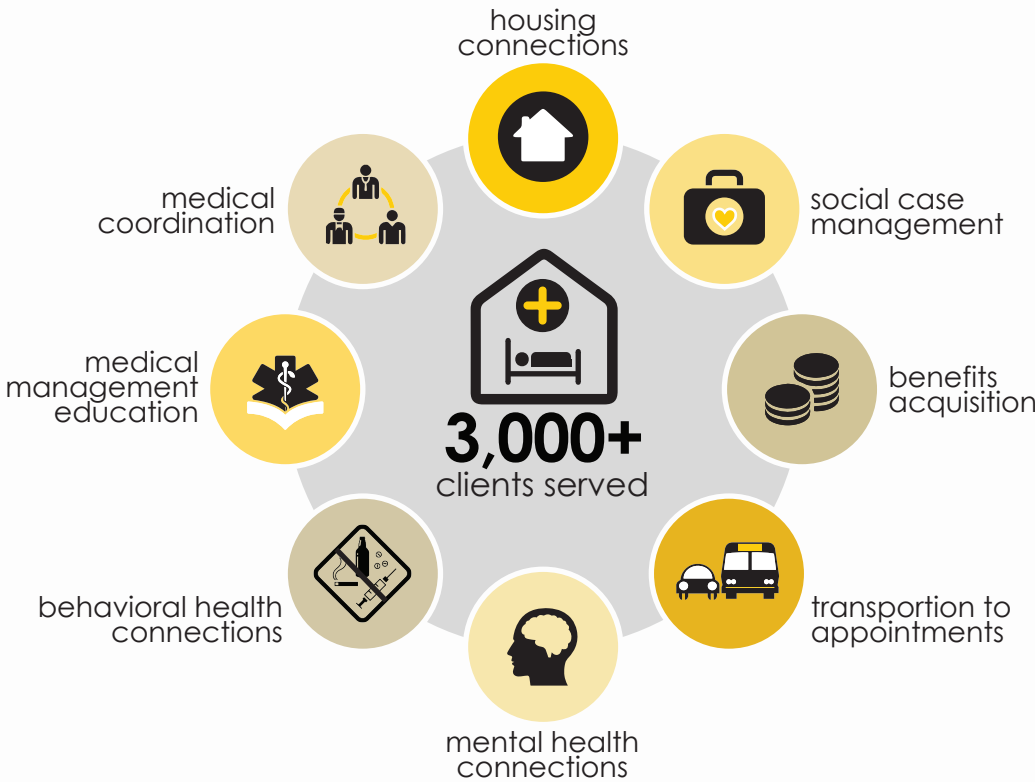
Cost for
1 month
 of Recuperative Care

152
 LA & OC
 hospitals

40%

have used
 Recuperative Care
 at least once

THE BENEFITS



33%
 Connected to
 transitional or
 permanent
 housing
 (Jan 2015 - June 2015)

\$19.0M
 in Cost Savings

Improved medical
 outcomes
50%
 Reduced Recidivism

THE PROGRAM

**Hospital Refers
 No walk-ins**

EMTALA Compliant
 Acute Recovery
 Medical Stabilization
 Mental Health Management

CRITERIA

- ✓ Homeless
- ✓ Independent
- ✓ AOx4